

A central graphic featuring the text "MEDICATION SAFETY" inside a square frame. The frame is surrounded by various medical icons including pills, capsules, and bottles. The text is in a bold, sans-serif font, with "MEDICATION" in grey and "SAFETY" in blue.

MEDICATION SAFETY

Norton Specialty Pharmacy provides advanced pharmacy services to patients needing specialized medications. We strive to provide quality care to improve the lives of patients taking high-cost or complicated medications.



Your safety is our priority at Norton Specialty Pharmacy. We want to help you be as safe and healthy as possible while taking your prescribed medications.

Side effects

Our pharmacists will tell you how to manage side effects that may be common with your medication. If you experience a reaction to a drug, acute medical symptoms or other health issues, call your health provider or **911**.

Drug recalls

If your medication has been recalled, a pharmacist will call you and explain what to do with your remaining supply. We will arrange for delivery of a replacement and notify your provider of the recall. The U.S. Food & Drug Administration often announces recalls. An up-to-date list can be found at **FDA.gov/Safety/Recalls**.

Drug disposal

To help reduce the chance that others may accidentally take or intentionally misuse unneeded or expired medications, you should dispose of medication promptly when it is no longer needed. Options include medicine take-back programs, permanent collection sites and home disposal devices. **Do not** throw chemotherapy or hazardous drugs in the trash or flush them down the toilet.

For more information on disposal options, visit **FDA.gov** and search “drug disposal.”

Home-generated biomedical waste disposal

Home-generated biomedical waste includes any type of syringe, lancet or needle used at home to inject medication or draw blood. These are commonly referred to as “sharps.” These items must be disposed of using special care to protect you and others from harm, as well as to protect the environment. If your treatment creates biomedical waste:

- Never put the cap back on a needle.
- Plan for safe handling and disposal of sharps before using them.
- Place all sharps in a sharps disposal container. If a sharps container is not available, use a hard plastic or metal container with a lid that fits tightly or screws on, such as a liquid laundry detergent bottle. Do not use a light plastic or glass container. Do not overfill the container: A good rule is no more than three-quarters full.
- Report any needle sticks or sharps-related injuries to your provider or local emergency department.
- Check with your local health department or waste collection service for sharps disposal instructions.

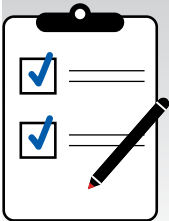
For more information, visit [SafeNeedleDisposal.org](https://www.SafeNeedleDisposal.org).

In the event of an emergency or disaster

We will work with you and your insurance company to replace medication that is exposed to heat or unsafe water, or has not been refrigerated. We also will help you if you had to leave your medication behind in an emergency. If we are not able to get replacement medication to you, we will work with another pharmacy to get it for you.

Medication do's and don'ts

Do's



Track your doses.

- Use a journal, notebook or mobile app.
- Check off each day and dose.

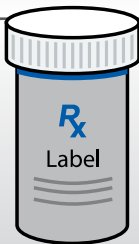


Turn on the lights.

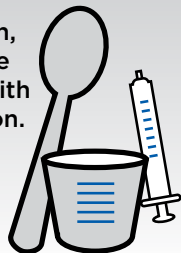


Put on your glasses.

Read the label every time.



Use the spoon, cup or syringe that comes with the medication.



Keep medications in their original, labeled containers or in a specified medication storage container.



Tell your doctor about all your medications, including over-the-counter and herbal supplements.

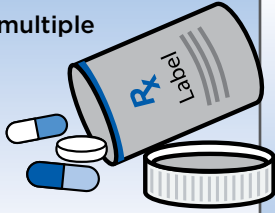


Call the Kentucky

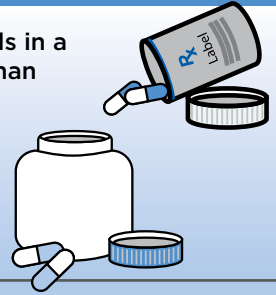
- You took too much of your medication or a double dose.
- You took someone else's medication – or they took yours.
- You're not sure, but you think you might have made a mistake.
- You have a question about medication safety.

Don'ts

Do not put multiple types of medication in the same pill bottle.

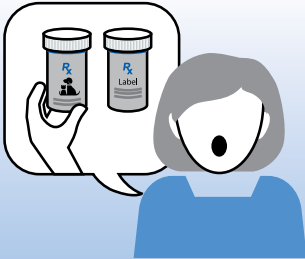
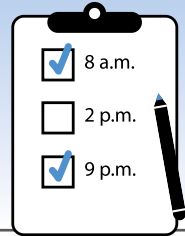


Do not put pills in a bottle other than their original container or a specified storage container.



Do not assume you'll remember if you took your medicine.

Do not skip a dose.



Do not ignore a medication mistake or try to adjust your dose on your own.

Poison Control Center if ...

The Kentucky Poison Control Center of Norton Children's Hospital is open 24 hours a day. All calls are free and confidential.



Kentucky
POISON
Control Center
of Norton Children's Hospital

For more information about Norton Specialty Pharmacy, visit **NortonHealthcare.com/SpecialtyPharmacy** or scan the QR code.



Contact us

Norton Specialty Pharmacy
2700 Stanley Gault Parkway, Suite 103
Louisville, Kentucky
(502) 559-1310 or **(866) 616-8088** (toll-free)
NortonSpecialtyPharmacy@nortonhealthcare.org

Hours

Monday through Friday, 8 a.m. to 6 p.m.
Closed on major holidays

Our pharmacists are on call after hours for clinical and medication support. If you need to reach a pharmacist after hours, call one of the numbers above and follow the prompts to leave an on-call message. In case of an emergency, call **911**.

The products and/or services provided to you by Norton Specialty Pharmacy are subject to the supplier standards contained in the federal regulations shown at 42 Code of Federal Regulations Section 424.57©. These standards concern business professional and operational matters (e.g., honoring warranties and hours of operation). Upon request we will furnish you a written copy of the standards. ECFR.gov



