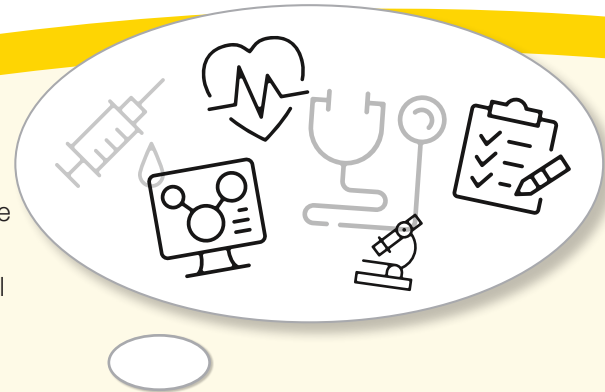


CAREER-READY

Registered Nurse First Assist Program

Norton Healthcare Center for Nursing Practice is announcing a new program for registered nurses! In this program, participants are employed with Norton Healthcare in a student registered nurse first assist position. In this position, trained registered nurses elevate their practice to scrub, circulate and assist within designated surgical cases. Participants in the program transition to a **registered nurse first assist** position once they complete the program and earn privileges.



Program overview

Made possible through a collaboration between Norton Healthcare and St. Elizabeth Healthcare, this self-paced program averages one year in length. The Career-Ready Registered Nurse First Assist Program has a hybrid structure:

- Virtual course content
- Three consecutive skill days on-site at St. Elizabeth Healthcare in Edgewood, Kentucky
- 130 clinical hours with Norton Healthcare at select hospital locations

Eligibility requirements

Applicants must meet the following criteria to apply:

- Current Kentucky and Indiana registered nurse license
- Bachelor's degree
- Two years of perioperative experience
- Certified nurse operation room (CNOR) certification
- Two letters of recommendation; one must be from a Norton Healthcare surgeon

Tuition assistance



Tuition assistance is available for program participants through the Norton Healthcare Scholars Program. You must remain up to date with program requirements to continue receiving tuition assistance. Visit [MyNortonScholar.com](https://www.mynorton scholar.com) or scan the **QR code** to create an account and get started. Email WorkforceDevelopment@nortonhealthcare.org if you have questions about tuition assistance.

Questions?

To learn more about the Career-Ready Registered Nurse First Assist Program and register for an upcoming information session, email the Norton Healthcare Schools of Nursing team at SON@nortonhealthcare.org.



Connect with our team at SON@nortonhealthcare.org.

EOE, including disability/vets

