

# CAREER-READY

## Associate Degree in Nursing Program

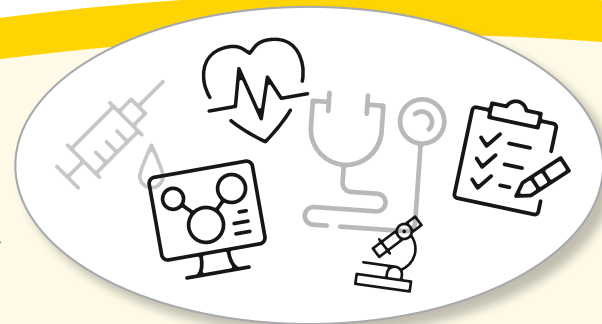
We're excited you are taking this first step toward a career as a registered nurse! Through Norton Healthcare's partnership with Galen College of Nursing, you are on track for a meaningful career in health care after your high school graduation.

### Take note of this important information before signing up for the Career-ready Associate Degree in Nursing Program:

- **High school** – You must remain enrolled in high school throughout the program. Your anticipated high school graduation is May 2027. Contact your school resource center for questions about your high school class schedule and courses required to graduate.
- **Galen College of Nursing** – Throughout the program, you must meet and adhere to Galen College of Nursing's requirements for student nurses, as published in the Galen College of Nursing Student Catalog. Your anticipated program completion is March 2029. Email [LOUCES@galencollege.edu](mailto:LOUCES@galencollege.edu) for questions about your associate degree curriculum, program admissions and participation requirements.
- **Tuition assistance** is available through the Norton Healthcare Scholars Program. You must remain up to date with the program requirements to continue receiving tuition assistance. For questions about tuition assistance, email [WorkforceDevelopment@nortonhealthcare.org](mailto:WorkforceDevelopment@nortonhealthcare.org).

To be considered for employment after completing the program, you must apply and interview for a registered nurse position and meet all pre-employment requirements.

*The Higher Education Opportunity Act of 2008 requires that postsecondary institutions participating in federal student aid programs make certain disclosures to enrolled and prospective students, parents, employees and the public. Galen College of Nursing makes this information available to you online at [GalenCollege.edu/Consumer-Disclosures](http://GalenCollege.edu/Consumer-Disclosures). Information regarding accreditation can be found at [GalenCollege.edu/About-Galen/Accreditation](http://GalenCollege.edu/About-Galen/Accreditation).  
EOE, including disability/vets*



Connect with our schools of nursing team at [SON@nortonhealthcare.org](mailto:SON@nortonhealthcare.org).

Center for  
Nursing Practice



GALEN  
COLLEGE OF NURSING

NORTON  
HEALTHCARE