

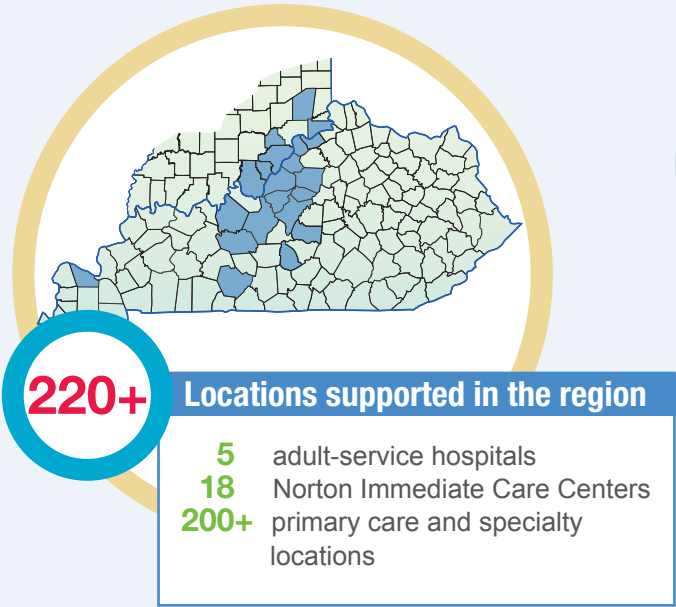


Your Gift Helps Keep Our **Community Healthy**

The Rev. John N. Norton was considered by many to be a good Samaritan because of his strong values and devotion to the poor. More than a century later, his giving spirit lives on in the more than 17,000 members of the Norton Healthcare family, and you are an extension of that family.

Norton Healthcare ensures quality, advanced care close to home — whether it's routine or highly complex, general or specialty, elective or in response to life-threatening emergencies — for the tiniest premature infants to our communities' elders, and everyone in between. In this report, you will find some of the ways you have had an impact on care for patients and families over the past year.

As the philanthropic arm of Norton Healthcare, the Norton Healthcare Foundation funds programs, equipment, facilities, research and education for patients and families receiving care at Norton Audubon Hospital, Norton Brownsboro Hospital, Norton Hospital, Norton Women's & Children's Hospital, Norton Cancer Institute, Norton Heart & Vascular Institute, Norton Neuroscience Institute, Norton Women's Care and other adult health programs.



Funding projects that help the whole person

As a not-for-profit organization, our greatest reward is the health of our community. Your gift helps fund health services and programs that support the body, mind and spirit so no one has to go far from home to get comprehensive care that helps them heal.



The Norton Healthcare Foundation helped fund these services and programs:



- FACILITIES AND TECHNOLOGY**
55%
- Renovations and expansion of patient care rooms at Norton Healthcare Pavilion
 - New, comprehensive Norton Neuroscience Institute facility on the Norton Brownsboro Hospital campus
 - Dedicated mobile primary care on one of two Norton Healthcare Mobile Prevention Centers
 - Diagnostic breast health equipment for Norton Women's & Children's Hospital
 - Cardiac catheterization technology at Norton Brownsboro Hospital
 - Norton Women's & Children's Hospital employee fitness center



- PROGRAMS/FINANCIAL ASSISTANCE**
18%
- Community health screenings and mammograms on our new Norton Healthcare Mobile Prevention Center
 - Digital education materials for Norton Cancer Institute and Norton Neuroscience Institute
 - Norton Prevention & Wellness programming
 - Heel, Dog, Heal facility dog program
 - Norton Cancer Institute community lectureships
 - Norton Neuroscience Institute Resource Center patient programming



- WORKFORCE**
22%
- Fellowship director for Norton Leatherman Spine
 - Pastoral care services
 - Norton Cancer Institute Food Assistance Program
 - Norton Neuroscience Institute social worker dedicated to Parkinson's disease patients
 - Rounsavall Family Foundation Endowed Chair for Norton Heart & Vascular Institute
 - Outreach programs through the Marshall Women's Health & Education Center on the Norton Healthcare – St. Matthews campus
 - Expressive art and music therapy for the Norton Cancer Institute Pat Harrison Resource Center in Southern Indiana

RESEARCH **5%**

- Delta Dental sleep study
- HIV self-test kits study
- Genetic approach study on squamous cell carcinoma
- COVID-19 clinical trials
- Oncofertility studies

There are many ways to support Norton Healthcare. Visit NortonHealthcareFoundation.com to get involved.